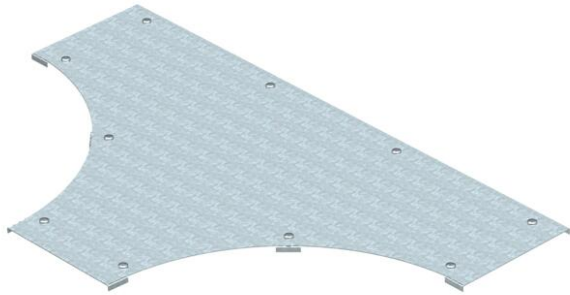


# Technical data sheet

## Cover for T branch piece DD



Item number: 6231675



Cover for wide span T branch piece with pre-mounted turn buckles.  
As the connector is mounted from the outside, the fitting cover is 300 mm shorter than the corresponding fitting. This must be considered when installing the track elements.



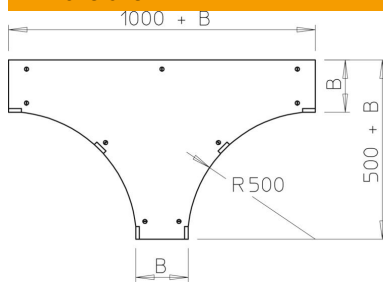
**St** Steel

**DD** Strip galvanised zinc/aluminium, Double Dip

### Master data

|                     |   |
|---------------------|---|
| Item number         | 6231675                                     |
| Type                | WDTRL 300 DD                                |
| Description 1       | Cover, T-branch piece                       |
| Description 2       | wide span system 110 and 160                |
| Manufacturer        | OBO   |
| Dimension           | B300mm                                      |
| Material            | Steel                                       |
| Surface             | Strip galvanised zinc/aluminium, Double Dip |
| Surface standard    | DIN EN 10346                                |
| Smallest sales unit | 1   |
| Unit of quantity    | Piece                                       |
| Weight              | 550 kg                                      |
| Weight unit         | kg/100 pc.                                  |

### Dimensions



|                 |        |
|-----------------|--------|
| Width           | 300 mm |
| Plate thickness | 1 mm   |
| Dimension B     | 300 mm |
| Dimension H     | 15 mm  |

# Technical data sheet

## Cover for T branch piece DD

Item number: 6231675



### Technical data

|                           |           |
|---------------------------|-----------|
| Number of turn buckles    | 9 St.     |
| Fastening type            | Sash lock |
| Suitable for cable ladder | yes       |
| Suitable for cable tray   | yes       |
| Material thickness        | 1 mm      |
| Rustproof steel, pickled  | no        |