

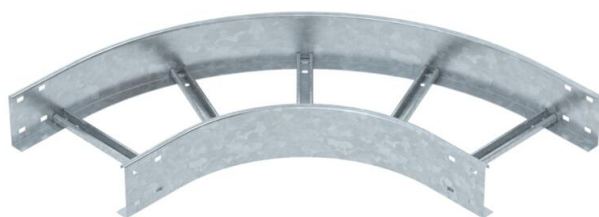
# Technical data sheet

90° bend 110 FT

Item number: 6225174



90° bend, horizontal, with welded rung for all cable ladder types of 110 mm side height.  
Connectors should be ordered separately and in the appropriate quantity.



**St** Steel

**FT** Hot-dip galvanised

## Master data

Item number	6225174
Type	SLB 90 1130R3 FT
Description 1	90° bend
Description 2	for cable ladder
Manufacturer	OBO
Dimension	110x300
Material	Steel
Surface	Hot-dip galvanised
Surface standard	DIN EN ISO 1461
Smallest sales unit	1
Unit of quantity	Piece
Weight	593.2 kg
Weight unit	kg/100 pc.

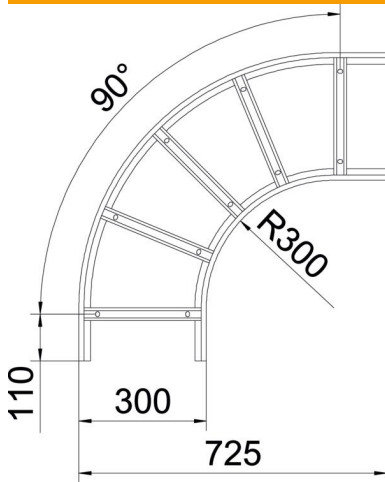
# Technical data sheet

90° bend 110 FT

Item number: 6225174



## Dimensions



Width	300 mm
Height	110 mm
Dimension B	300 mm
Dimension R	300 mm

## Technical data

Bend (angle)	90°
Version of the rungs	Profile unperforated
Side rail version	Flat profile
Connector version	Without connectors
Maintain electrical functions	no
Change of direction	Horizontal
Rustproof steel, pickled	no
Hinged	no
Side perforation	no
Wide-span version	no
Rail thickness	2 mm