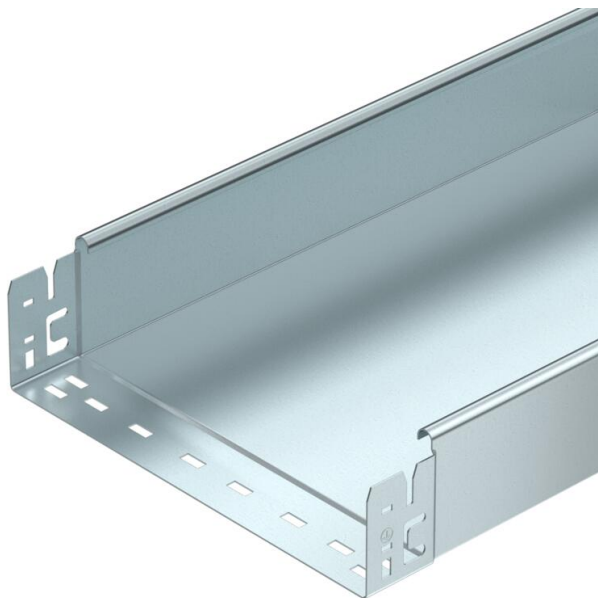


# Technical data sheet

## Cable tray SKS-Magic® 85, unperforated FT

Item number: 6059789



Unperforated cable tray with integrated quick fastening system. The usable length of the cable tray is 3,000 mm. Continuous equipotential bonding is guaranteed without additional components.



**St** Steel

**FT** Hot-dip galvanised

### Master data

|                     |                               |
|---------------------|-------------------------------|
| Item number         | 6059789                       |
| Type                | SKSMU 850 FT                  |
| Description 1       | Cable tray SKSMU              |
| Description 2       | unperforated, quick connector |
| Manufacturer        | OBO                           |
| Dimension           | 85x500x3050                   |
| Material            | Steel                         |
| Surface             | Hot-dip galvanised            |
| Surface standard    | DIN EN ISO 1461               |
| Smallest sales unit | 3                             |
| Unit of quantity    | Metre                         |
| Weight              | 848.721 kg                    |
| Weight unit         | kg/100 m                      |

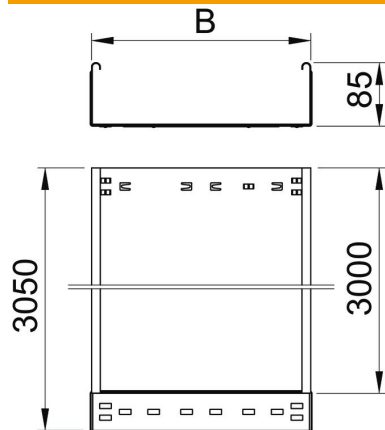
# Technical data sheet

## Cable tray SKS-Magic® 85, unperforated FT

Item number: 6059789



### Dimensions



|                 |          |
|-----------------|----------|
| Length          | 3,050 mm |
| Width           | 500 mm   |
| Height          | 85 mm    |
| Plate thickness | 1.5 mm   |
| Dimension B     | 500 mm   |

### Technical data

|   |                       |
|---|-----------------------|
| Connector version                       | Integrated connector  |
| Mounting system fastening type          | Floor Ceiling Wall    |
| Walkable                                | no                    |
| Maintain electrical functions           | no                    |
| With cover                              | no                    |
| Mounting perforation in base            | no                    |
| NATO hole pattern                       | no                    |
| Usable cross-section                    | 423 cm <sup>2</sup>   |
| Usable cross-section                    | 42300 mm <sup>2</sup> |
| Rustproof steel, pickled                | no                    |
| Side perforation                        | no                    |
| Wide-span version                       | no                    |
| Load test type according to IEC 61537   | Type II               |
| Usable length                           | 3000 mm               |
| Type of connector, cable support system | Click fastening       |

# Technical data sheet

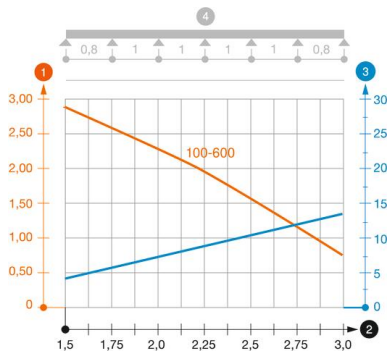
## Cable tray SKS-Magic® 85, unperforated FT

Item number: 6059789



### Loads

|                                   |           |
|-----------------------------------|-----------|
| Insertable support spacings, min. | 1.5 m     |
| Insertable support spacings, max. | 3 m       |
| Support spacing 1.5 m             | 2.8 kN/m  |
| Support spacing 2.0 m             | 2.25 kN/m |
| Support spacing 2.5 m             | 1.5 kN/m  |
| Support spacing 3.0 m             | 0.75 kN/m |



### Load diagram, cable tray, type SKSMU 85

- 1 Permitted cable tray/ladder load in kN/m without man load
- 2 Support width in m
- 3 Rail bend in mm at permitted kN/m
- 4 Load scheme during testing
- Load curve with cable tray/ladder width in mm
- Strut bend curve according to support width