

Technical data sheet

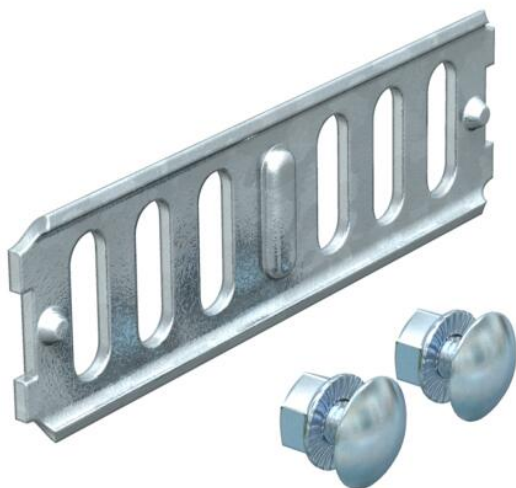
Straight connector FT

Item number: 6067301



Straight connector for connections of cable trays and fittings with a side height of 35 mm.

Including appropriate fastening material.



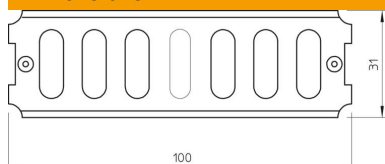
St Steel

FT Hot-dip galvanised

Master data

Item number	6067301
Type	RLVK 35 FT
Description 1	Straight connector
Description 2	for cable tray
Manufacturer	OBO
Dimension	35x100
Material	Steel
Surface	Hot-dip galvanised
Surface standard	DIN EN ISO 1461
Smallest sales unit	10
Unit of quantity	Piece
Weight	5.1 kg
Weight unit	kg/100 pc.

Dimensions



Dimension	100 x 31
Length	100 mm
Width	3.5 mm
Height	31 mm
Height	1 in
Plate thickness	2 mm

Technical data sheet

Straight connector FT

Item number: 6067301



Technical data

Version for	Straight connector
Maintain electrical functions	no
Suitable for mesh cable tray	no
Suitable for cable ladder	no
Suitable for cable tray	yes
Suitable for cable tray system height	35 mm
Adjustable connector, horizontal	no
Articulated connector, vertical	no
Rustproof steel, pickled	no
Connection type	Screw connector