

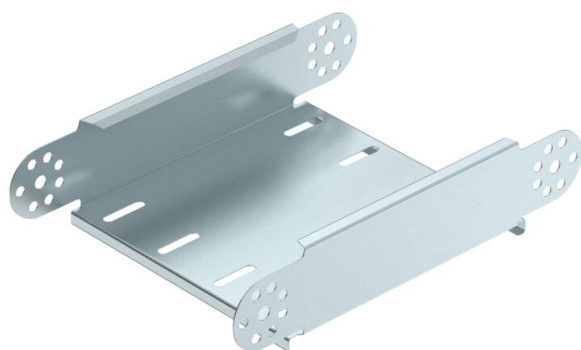
# Technical data sheet

## Adjustable bend element, vertical 60 FS

Item number: 7005441



Adjustable bend element, vertical, for all cable tray types with a side height of 60 mm.  
RGV 60 adjustable connectors should be ordered separately and in the appropriate quantity.



**St** Steel

**FS** Strip galvanized

### Master data

Item number	7005441
Type	RGBEV 660 FS RU
Description 1	Adjustable bend element
Description 2	vertical
Manufacturer	OBO
Dimension	60x600
Material	Steel
Surface	Strip galvanized
Surface standard	DIN EN 10346
Smallest sales unit	1
Unit of quantity	Piece
Weight	79 kg
Weight unit	kg/100 pc.

### Dimensions

Width	600 mm
Height	60 mm
Plate thickness	0.7 mm
Dimension B	600 mm

# Technical data sheet

## Adjustable bend element, vertical 60 FS

Item number: 7005441



### Technical data

Connector version	Without connectors
Type	Adjustable bend element
Maintain electrical functions	no
Mounting perforation in base	no
NATO hole pattern	no
Change of direction	Vertical, rising/falling
Rustproof steel, pickled	no
Side perforation	no
Wide-span version	no
Type of connector, cable support system	Screwed