

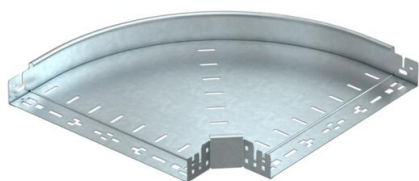
# Technical data sheet

90° Magic bend 60 FT

Item number: 6041158



90° bend with quick connector system. For all cable tray types of 60 mm side height.



**St** Steel

**FT** Hot-dip galvanised

## Master data

Item number	6041158
Type	RBM 90 640 FT
Description 1	90° bend
Description 2	with quick connector
Manufacturer	OBO
Dimension	60x400
Material	Steel
Surface	Hot-dip galvanised
Surface standard	DIN EN ISO 1461
Smallest sales unit	1
Unit of quantity	Piece
Weight	296.3 kg
Weight unit	kg/100 pc.

# Technical data sheet

90° Magic bend 60 FT

Item number: 6041158



## Dimensions



Width	400 mm
Width	16 in
Height	60 mm
Height	2 in
Plate thickness	1.25 mm
Dimension B	400 mm

## Technical data

Bend (angle)	90°
Connector version	Integrated connector
Type	Bend, rigid
Maintain electrical functions	yes
Mounting perforation in base	no
NATO hole pattern	no
Change of direction	Horizontal
Rustproof steel, pickled	no
Side perforation	no
Wide-span version	no
Type of connector, cable support system	Click fastening