

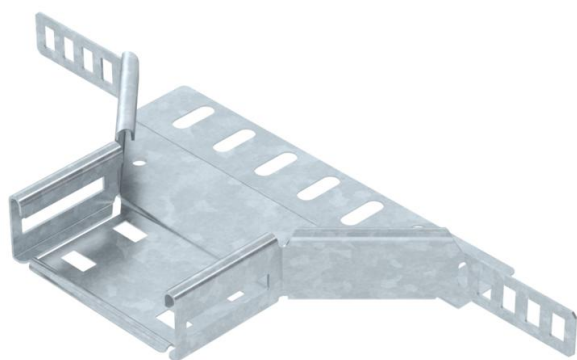
Technical data sheet

Add-on tee 35 FT

Item number: 6042201



Add-on tee for the creation of a horizontal branch or cross-over, fitting for lock and screw-on cable trays of side height 35 mm. Screw connection with FRS truss-head screws and M6 combination nuts. Can be used indoors and outdoors. Fastening material must be ordered separately.



St Steel

FT Hot-dip galvanised

Master data

Item number	6042201
Type	RAA 310 FT
Description 1	Add-on tee
Description 2	for cable tray
Manufacturer	OBO
Dimension	35x100
Material	Steel
Surface	Hot-dip galvanised
Surface standard	DIN EN ISO 1461
Smallest sales unit	1
Unit of quantity	Piece
Weight	25 kg
Weight unit	kg/100 pc.

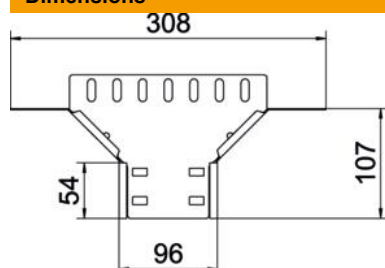
Technical data sheet

Add-on tee 35 FT

Item number: 6042201



Dimensions



Width	100 mm
Height	35 mm
Plate thickness	0.8 mm
Dimension B	100 mm

Technical data

Departing width	100 mm
Connector version	Integrated connector
Maintain electrical functions	no
Material thickness, floor plate	0.8 mm
NATO hole pattern	no
Rustproof steel, pickled	no
Permitted temperature range, max.	120 °C
Permitted temperature range, min.	-20 °C
Wide-span version	no
Type of connector, cable support system	Screwed
Recommended quantity of bolts	6 St.
Rail thickness	1.25 mm