

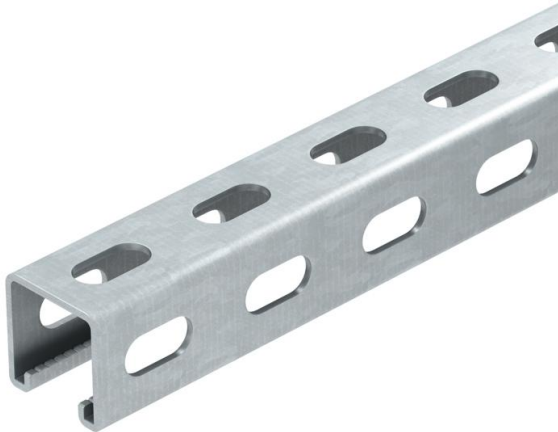
Technical data sheet

MS4141 mounting rail, slot width 22 mm, FT, side perforation

Item number: 1122487



Heavy-duty C profile rail for individual installation of support constructions, e.g. for cable trays or as a panel for switchgear cabinets. Can also be used for cable routing, in conjunction with clamp clips with a U foot.



St

Steel

FT

Hot-dip galvanised

Master data

Item number	1122487
Type	MS4141PP6000FT
Description 1	Profile rail
Description 2	side perforation, slot 22 mm
Manufacturer	OBO
Dimension	6000x41x41
Material	Steel
Surface	Hot-dip galvanised
Surface standard	DIN EN ISO 1461
Smallest sales unit	6
Unit of quantity	Metre
Weight	225 kg
Weight unit	kg/100 m

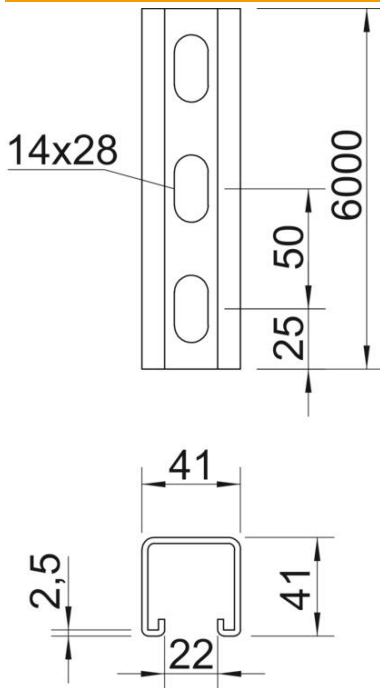
Technical data sheet

MS4141 mounting rail, slot width 22 mm, FT, side perforation

Item number: 1122487



Dimensions



Length	6,000 mm
Width	41 mm
Height	41 mm
Dimension L	6,000 mm

Technical data

Breakable	no
Type of perforation	3 sides perforated
Version for	Single profile
Drill hole spacing, centre	50 mm
Maintain electrical functions	no
Hole size	11x25 mm
Material thickness	2.5 mm
With perforation	yes
With tothing	yes
Profile shape	C profile
Slot width	22 mm
Static value A	2.42 cm ²
Static value Iy	6 cm
Static value Iz	6.97 cm
Static value Wy	2.49 cm ²
Static value Wz	2.88 cm ²