

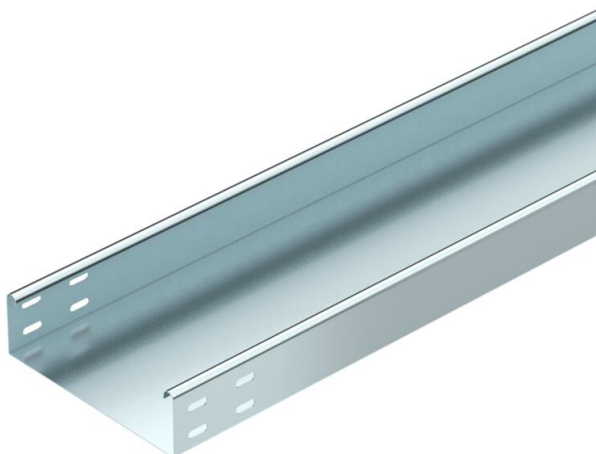
# Technical data sheet

## LKSU 60 cable tray FS RU 100–300 mm unperforated

Item number: 6048944



Light-duty cable tray with 60 mm side height.  
Magnetic shield insulation without cover 20 dB, with cover 50 dB.  
Connecting parts should be ordered in the appropriate quantity.



CE

- St** Steel
- FS** Strip galvanized

### Master data

Item number	6048944
Type	LKSU 620 FS RU
Description 1	Cable tray LKSU
Description 2	unperforated
Manufacturer	OBO
Dimension	60x200x3000
Material	Steel
Surface	Strip galvanized
Surface standard	DIN EN 10346
Smallest sales unit	3
Unit of quantity	Metre
Weight	194.6 kg
Weight unit	kg/100 m

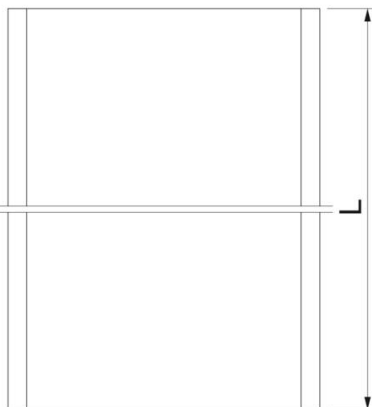
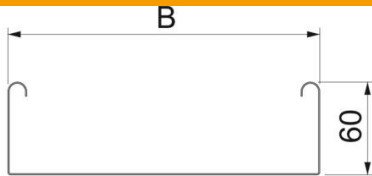
# Technical data sheet

## LKSU 60 cable tray FS RU 100–300 mm unperforated

Item number: 6048944



### Dimensions



Dimension	60 x 200
Length	3,000 mm
Width	200 mm
Height	60 mm
Plate thickness	0.7 mm
Dimension B	200 mm
Dimension L	3,000 mm
Dimension x	100 mm
Dimension y	150 mm

### Technical data

Connector version	Without connectors
Mounting system fastening type	Floor Ceiling Wall
Walkable	no
Maintain electrical functions	no
With cover	no
Mounting perforation in base	no
NATO hole pattern	no
Usable cross-section	116 cm <sup>2</sup>
Usable cross-section	11600 mm <sup>2</sup>
Rustproof steel, pickled	no
Side perforation	no
Wide-span version	no
Load test type according to IEC 61537	Type III
Type of connector, cable support system	Screwed

# Technical data sheet

## LKSU 60 cable tray FS RU 100–300 mm unperforated

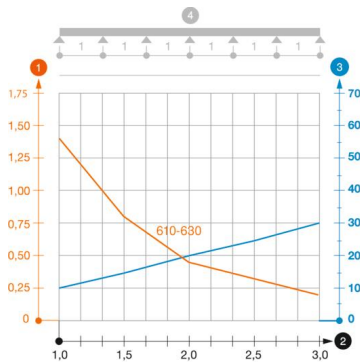
Item number: 6048944



### Loads

Support spacing 1.0 m	1.4 kN/m
Support spacing 1.5 m	0.8 kN/m
Support spacing 2.0 m	0.45 kN/m
Support spacing 3.0 m	0.2 kN/m

#### Load diagram, cable tray, type LKSU 610 to 630



- 1 Permitted cable tray/ladder load in kN/m without man load
- 2 Support width in m
- 3 Rail bend in mm at permitted kN/m
- 4 Load scheme during testing
- Load curve with cable tray/ladder width in mm
- Strut bend curve according to support width
- \* Tested according to testing type III (EN 61537 - 10.3.3.)