

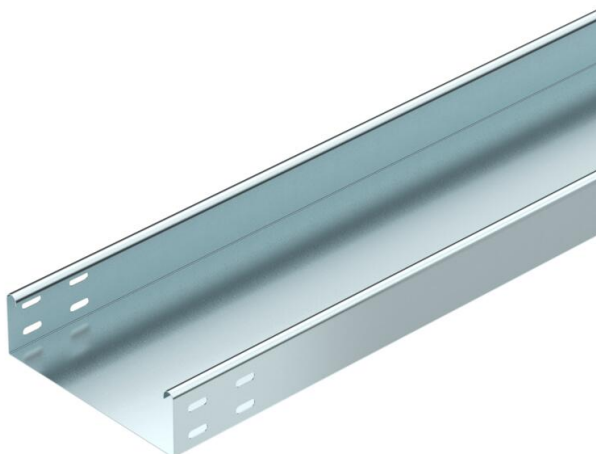
Technical data sheet

LKSU 60 cable tray FS RU 100–300 mm unperforated

Item number: 6048942



Light-duty cable tray with 60 mm side height.
Magnetic shield insulation without cover 20 dB, with cover 50 dB.
Connecting parts should be ordered in the appropriate quantity.



CE

- St** Steel
- FS** Strip galvanized

Master data

Item number	6048942
Type	LKSU 615 FS RU
Description 1	Cable tray LKSU
Description 2	unperforated
Manufacturer	OBO
Dimension	60x150x3000
Material	Steel
Surface	Strip galvanized
Surface standard	DIN EN 10346
Smallest sales unit	3
Unit of quantity	Metre
Weight	162 kg
Weight unit	kg/100 m

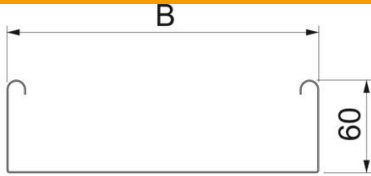
Technical data sheet

LKSU 60 cable tray FS RU 100–300 mm unperforated

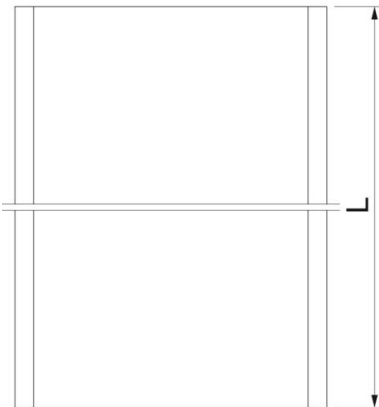
Item number: 6048942



Dimensions



Dimension	60 x 150
Length	3,000 mm
Width	150 mm
Height	60 mm
Plate thickness	0.7 mm
Dimension B	150 mm
Dimension L	3,000 mm



Technical data

Connector version	Without connectors
Mounting system fastening type	Floor Ceiling Wall
Walkable	no
Maintain electrical functions	no
With cover	no
Mounting perforation in base	no
NATO hole pattern	no
Usable cross-section	88 cm ²
Usable cross-section	8800 mm ²
Rustproof steel, pickled	no
Side perforation	no
Wide-span version	no
Load test type according to IEC 61537	Type III
Type of connector, cable support system	Screwed

Technical data sheet

LKSU 60 cable tray FS RU 100–300 mm unperforated

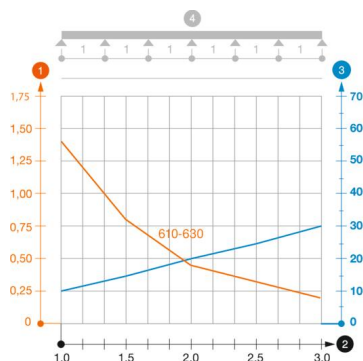
Item number: 6048942



Loads

Support spacing 1.0 m	1.4 kN/m
Support spacing 1.5 m	0.8 kN/m
Support spacing 2.0 m	0.45 kN/m
Support spacing 3.0 m	0.2 kN/m

Load diagram, cable tray, type LKSU 610 to 630



- 1 Permitted cable tray/ladder load in kN/m without man load
- 2 Support width in m
- 3 Rail bend in mm at permitted kN/m
- 4 Load scheme during testing
- Load curve with cable tray/ladder width in mm
- Strut bend curve according to support width
- * Tested according to testing type III (EN 61537 - 10.3.3.)