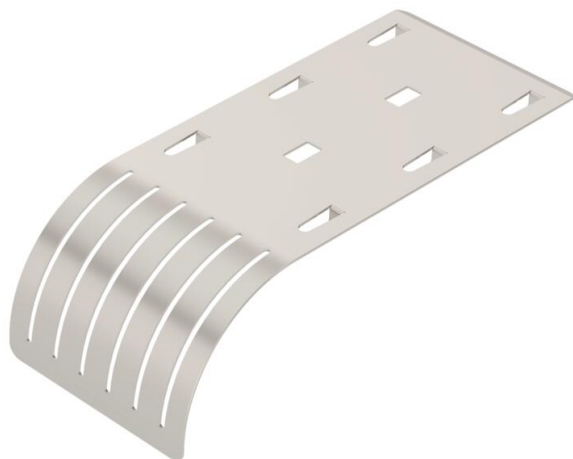


Technical data sheet

Drop-out plate A2

Item number: 6220145



Drop-out plate for mesh cable trays.

The exit plate allows compliance with specific bend radii, thus preventing possible cable breaks. Can be mounted in a lengthwise direction and at the side, can be arranged for greater widths.



A2 Stainless steel

2B Bright, treated

Master data

Item number	6220145
Type	KAB GR A2
Description 1	Cable exit plate
Description 2	for mesh cable tray
Manufacturer	OBO
Dimension	192x85x51
Material	Stainless steel
Surface	Bright, treated
Surface standard	
Smallest sales unit	10
Unit of quantity	Piece
Weight	14.1 kg
Weight unit	kg/100 pc.

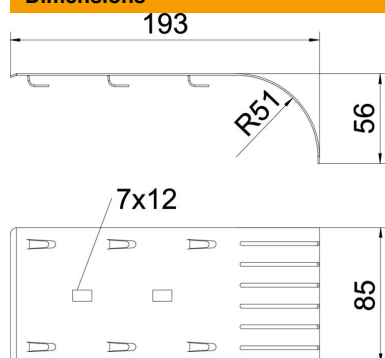
Technical data sheet

Drop-out plate A2

Item number: 6220145



Dimensions



Length	193 mm
Width	85 mm
Width	3.47 in

Technical data

Maintain electrical functions	no
Rustproof steel, pickled	no
Wide-span version	no