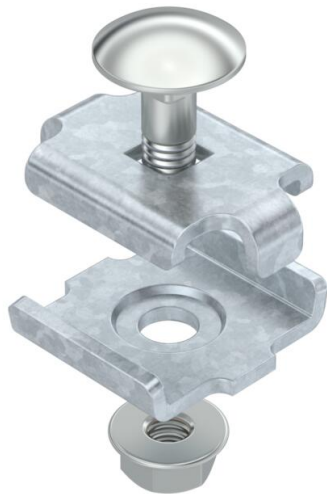


# Technical data sheet

## Joint connector FT

Item number: 6016634



Screwed version of joint connector for mesh cable trays.  
Including FRS M6 x 20 bolt with flange nut.  
Figure: Positioning and quantity of mesh cable tray connectors.

50–150 mm = 2 units

200–300 mm = 3 units

400–450 mm = 4 units

500–600 mm = 5 units



**St** Steel

**FT** Hot-dip galvanised

### Master data

|                                   |                        |
|-----------------------------------|------------------------|
| Item number                       | 6016634                |
| Description 1                     | Joint connector        |
| Description 2                     | for mesh cable tray    |
| Manufacturer                      | OBO                    |
| Colour                            | zinc                   |
| Material                          | Steel                  |
| Surface                           | Hot-dip galvanised     |
| Surface standard                  | DIN EN ISO 1461        |
| Smallest sales unit               | 20                     |
| Unit of quantity                  | Piece                  |
| Weight                            | 3.15 kg                |
| Weight unit                       | kg/100 pc.             |
| CO Footprint (GWP) Cradle-to-Gate | 0,088 kg COe / 1 Piece |

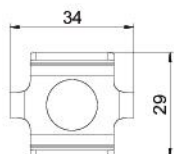
# Technical data sheet

## Joint connector FT

Item number: 6016634



### Dimensions



|           |           |
|-----------|-----------|
| Dimension | 34 x 27,5 |
| Length    | 34 mm     |
| Width     | 29 mm     |
| Width     | 1.14 in   |
| Height    | 24 mm     |
| Height    | 0.94 in   |

### Technical data

|   |                    |
|---|--------------------|
| Version for                             | Straight connector |
| Maintain electrical functions           | no                 |
| Suitable for mesh cable tray            | yes                |
| Suitable for cable ladder               | no                 |
| Suitable for cable tray                 | no                 |
| Adjustable connector, horizontal        | no                 |
| Articulated connector, vertical         | no                 |
| Suitable for mesh cable tray wire, max. | 4.9 mm             |
| Suitable for mesh cable tray wire, min. | 3.9 mm             |
| Rustproof steel, pickled                | no                 |
| Connection type                         | Screw connector    |