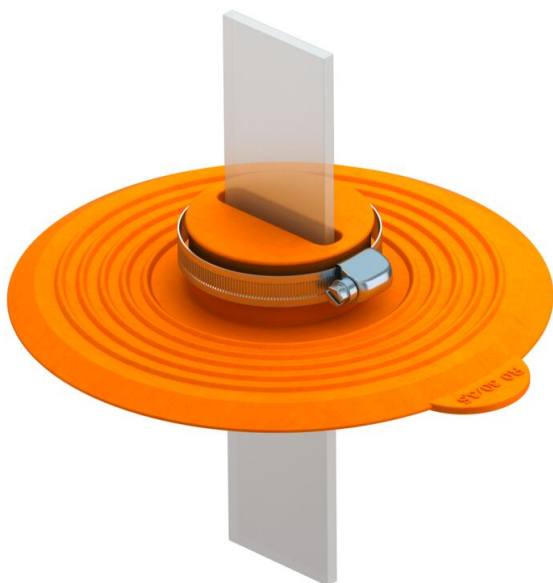


Technical data sheet

Sealing sleeve for flat conductors



Item number: 2360043



- Sealing sleeve for penetrations of waterproof foundation plates/walls (e.g. white trough)
- For mounting on connection lugs with stainless steel tightening straps
- With pressurised water testing to 5 bar
- According to DIN EN 62561-5 (VDE 0185-561-5)

TPE Thermoplastic elastomer

Master data

Item number	2360043
Type	DW FL30x3,5
Description 1	Seal collar
Description 2	for flat conductors 30x3.5mm
Manufacturer	OBO
Dimension	30x3,5
Colour	Pastel orange; RAL 2003
Material	Thermoplastic elastomer
Smallest sales unit	1
Unit of quantity	Piece
Weight	18 kg
Weight unit	kg/100 pc.

Technical data

Type of accessory	Sealing sleeve
Fit	FL 30x3,5 mm