

Technical data sheet

Connection sleeve

Item number: 6410111



Connection sleeve with continuous internal thread.



CE

St Steel

G Electrogalvanized

Master data

Item number	6410111
Type	CSTR M12 G
Description 1	Connection sleeve
Description 2	for threaded rod
Manufacturer	OBO
Dimension	M12x40mm
Material	Steel
Surface	Electrogalvanized
Surface standard	EN ISO 19598 / EN ISO 4042
Smallest sales unit	25
Unit of quantity	Piece
Weight	7 kg
Weight unit	kg/100 pc.

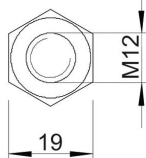
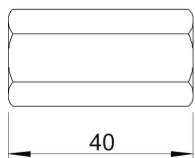
Technical data sheet

Connection sleeve

Item number: 6410111



Dimensions



Length	40 mm
Dimension 1, metric	12
Dimension 2, metric	12
Dimension L	1.57 in
Dimension L	40 mm

Technical data

Continuous thread	yes
Shape	Hexagonal
Thread	M12
WAF	19
Hexagonal	yes