

Technical data sheet

External fastening or connection

Item number: 2007990

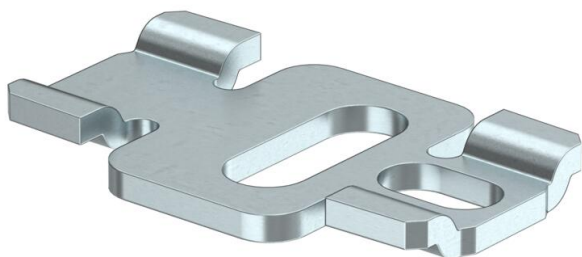


The convenient external fastening/connection means the cable boxes and small distributors of the S and SDB series can be fastened easily to a wall. Because they fasten outside the cable box, the possibility of voltage carry over is ruled out.

The external fastening/connection can also be used for connecting several boxes with one another. Time savings thanks to smaller number of fastening drill holes required.

The junction box is tested according to DIN EN 60670-1, VDE 0606-1:2014 (EN 60670-1:2005 + Cor.:2007 + Cor.:2010 + A1:2013) and DIN EN 60670-22, VDE 0606-22:2007 (EN 60670-22:2006)

The junction box fulfils the protection type test requirements to IP 67 according to DIN EN 60529, VDE0470-1:2014 (EN 60529/AC:2016)



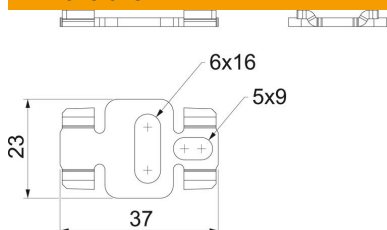
A2 Stainless steel

2B Bright, treated

Master data

Item number	2007990
Description 1	External fastening connection
Manufacturer	OBO
Dimension	6mm
Material	Stainless steel
Surface	Bright, treated
Surface standard	
Smallest sales unit	20
Unit of quantity	Piece
Weight	0.9 kg
Weight unit	kg/100 pc.

Dimensions



Length	37 mm
Width	23 mm
Height	3.8 mm