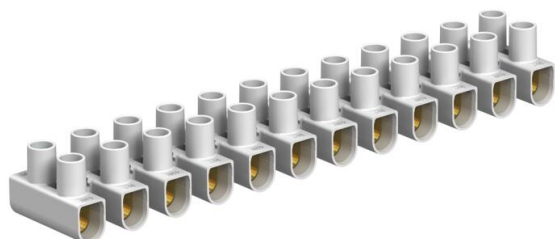


# Technical data sheet

## 10 mm<sup>2</sup> series connectors, polypropylene

Item number: 2056372



Tested to EN 60998.  
Steel terminals, steel screws, electrogalvanised, 12-pole, individual terminals detachable from strips using "twist'n'pull".  
Captive upwards screw.  
Max. approved ambient temperature to EN 60998: -5 to +80 °C.  
Nominal cross-section 10 ± mm<sup>2</sup>.  
Nominal voltage 450 V.  
Nominal current 57 A.  
Max. attachment each side: 10 mm<sup>2</sup> single-wire or 6 mm<sup>2</sup> multi-wire/flexible.



**PP** Polypropylene

### Master data

Item number	2056372
Type	76 CE WS/EKL 2 S
Description 1	Terminal strip
Manufacturer	OBO
Dimension	10,0mm <sup>2</sup>
Colour	White
Material	Polypropylene
Smallest sales unit	10
Unit of quantity	Piece
Weight	4.3 kg
Weight unit	kg/100 pc.

### Dimensions

Length	134 mm
Width	23 mm
Height	17 mm

### Technical data

Closing plate required	no
Connectable conductor cross-section, single-wire, max.	10 mm <sup>2</sup>
Connectable conductor cross-section, single-wire, min.	2.5 mm <sup>2</sup>
Connectable conductor cross-section, fine-wire without wire-end ferrule, max.	6 mm <sup>2</sup>
Connectable conductor cross-section, fine-wire without wire-end ferrule, min.	2.5 mm <sup>2</sup>
Connectable conductor cross-section, multi-wire, max.	6 mm <sup>2</sup>

# Technical data sheet

## 10 mm<sup>2</sup> series connectors, polypropylene

Item number: 2056372



### Technical data

Connectable conductor cross-section, multi-wire, min.	2.5 mm <sup>2</sup>
Connection position	Side
No. of terminals	12
Number of screwless terminals per pole	2
Version of electrical connection 1	Screw connection
Version of electrical connection 2	Screw connection
Drill hole spacing, centre	11.5 mm
Explosion-tested version	no
Suitable for flexible conductors	yes
Suitable for solid conductors	yes
Suitable for multi-wire conductors	yes
Mounting type	Direct mounting
Nominal cross-section, min.	10 mm <sup>2</sup>
Nominal voltage	450 V
Nominal current	57 A
Pole number	12
Cross-section	Max. attachment each side: 10 mm <sup>2</sup> single-wire or 6 mm <sup>2</sup> multi-wire/flexible mm <sup>2</sup>
Screw tightening torque	0.8 kN/m
Permitted temperature range, max.	80 °C
Permitted temperature range, min.	-5 °C
Transparent	no
Ambient temperature	80 °C