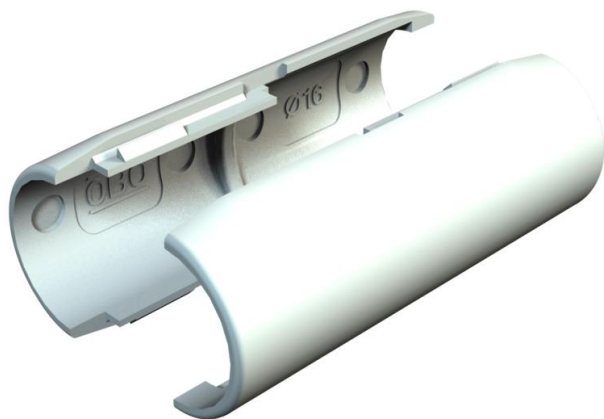


Technical data sheet

Quick pipe connecting sleeve, light grey

Item number: 2153833



Connection sleeve for plastic electrical installation pipes to create straight connections. Suitable for Quick pipe pipes or corrugated pipes. Toolless closing and opening. Can be used in a temperature range of -25 to +60 °C.

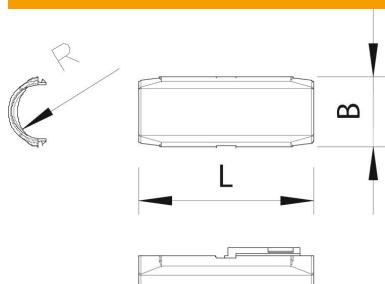


PVC Polyvinylchloride

Master data

Item number	2153833
Type	2953 M M25 LGR
Description 1	Quick pipe connecting sleeve
Manufacturer	OBO
Dimension	M25
Colour	Light grey; RAL 7035
Material	Polyvinylchloride
Smallest sales unit	10
Unit of quantity	Piece
Weight	1.348 kg
Weight unit	kg/100 pc.

Dimensions



Dimension B	31.2 mm
Dimension L	72 mm
Dimension R	12.55 mm

Technical data

Thread	M25
Size	M25

Technical data sheet

Quick pipe connecting sleeve, light grey

Item number: 2153833



Technical data

Halogen-free	no
Polished surface	no
Permitted temperature range, max.	60 °C
Permitted temperature range, min.	0 °C