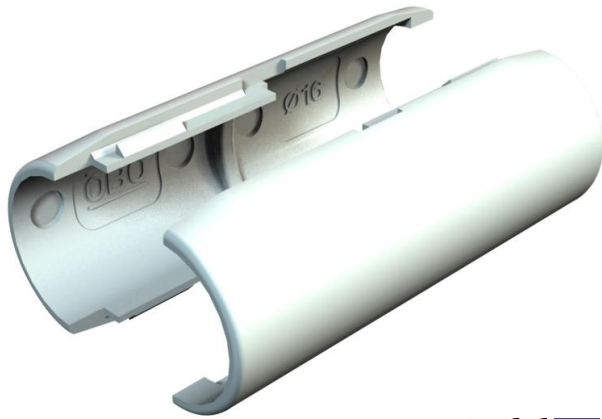


# Technical data sheet

## Quick pipe connecting sleeve, light grey

Item number: 2153829



Connection sleeve for plastic electrical installation pipes to create straight connections. Suitable for Quick pipe pipes or corrugated pipes. Toolless closing and opening. Can be used in a temperature range of -25 to +60 °C.

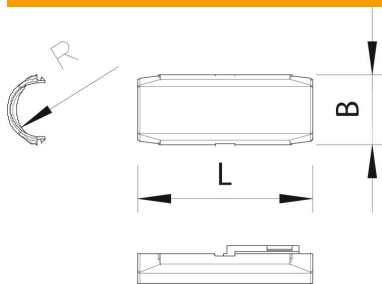


**PVC** Polyvinylchloride

### Master data

Item number	2153829
Type	2953 M M16 LGR
Description 1	Quick pipe connecting sleeve
Manufacturer	OBO
Dimension	M16
Colour	Light grey; RAL 7035
Material	Polyvinylchloride
Smallest sales unit	10
Unit of quantity	Piece
Weight	0.538 kg
Weight unit	kg/100 pc.

### Dimensions



Dimension B	20.4 mm
Dimension L	52 mm
Dimension R	7.85 mm

### Technical data

Thread	M16
Size	M16

# Technical data sheet

Quick pipe connecting sleeve, light grey

Item number: 2153829



## Technical data

Halogen-free	no
Polished surface	no
Permitted temperature range, max.	60 °C
Permitted temperature range, min.	0 °C