

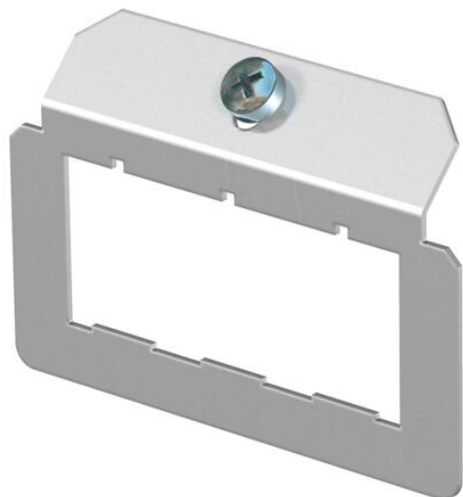
Technical data sheet

Support plate 3 x type E for mounting support

Item number: 7407832



Support plate to accept three data connection modules, type Corning.
Dimensions of a mounting opening in mm: 22.80 x 18.00.

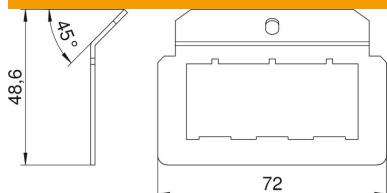


A2 Stainless steel

Master data

Item number	7407832
Description 1	Support plate
Description 2	with 3x hole pattern Type E
Manufacturer	OBO
Material	Stainless steel
Smallest sales unit	1
Unit of quantity	Piece
Weight	2.32 kg
Weight unit	kg/100 pc.

Dimensions



Length 72 mm

Technical data sheet

Support plate 3 x type E for mounting support

Item number: 7407832



Technical data

Connection options	3 data connection modules, type Corning
Number of installable devices	3
Number of strain reliefs	0
Version for	Support shape
Fastening type	Lockable
Labelling panel	no
Floor covering protection frame	no
Floor plate	no
Lowerable to be flush-floor	no
Seal installation option	no
Installation opening for on-floor tank	no
Decouplable	no
Suitable for raised floor installation	yes
Suitable for screed-flush closed underfloor ducts	yes
Suitable for screed-covered underfloor ducts	yes
Suitable for cavity floor installation	yes
Suitable for underfloor ducts	yes
With floor covering recess	no
Heavy-duty version	no
Depth	48.6 mm
Strain relief option	yes