

Technical data sheet

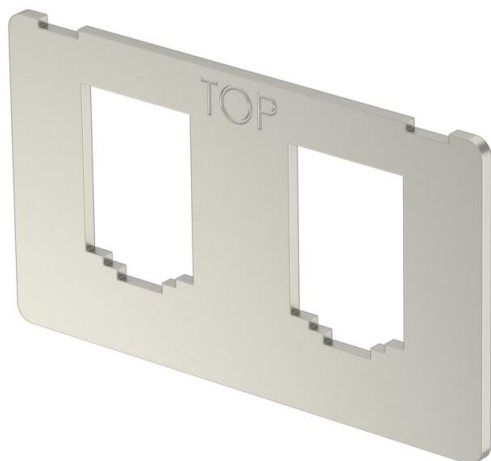
Support plate 2 x type B for mounting support

Item number: 7408714



Support plate to accept two connection modules for data connection modules of the following types BTR: E-DAT; Dätwyler: MS and MS-N; Kerpen: VarioKeystone.

Dimensions of a mounting opening in mm: 19.35/21.55 x 14.85.

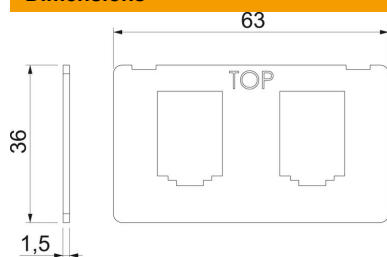


A2 Stainless steel

Master data

Item number	7408714
Description 1	Mounting plate
Description 2	with 2x hole pattern Type B
Manufacturer	OBO
Dimension	63x36x1,5
Material	Stainless steel
Smallest sales unit	1
Unit of quantity	Piece
Weight	1.92 kg
Weight unit	kg/100 pc.

Dimensions



Length	63 mm
Width	36 mm
Height	1.5 mm

Technical data sheet

Support plate 2 x type B for mounting support

Item number: 7408714



Technical data

Connection options	3 data connection modules of the following types BTR: E-DAT; Dätwyler: MS and MS-N; Kerpen: VarioKeystone
Application	Mounting box
Number of CEE/Perilex openings	0
Number of triple openings	0
Number of installable devices	2
Number of single openings	2
Number of oval openings	0
Number of square openings	0
Number of round openings	0
Number of double openings	0
Fastening type	Lockable
Labelling panel	no
Blanking lid	no
Suitable for labelling panel	no
Device type	Miscellaneous
Installation technology	Miscellaneous