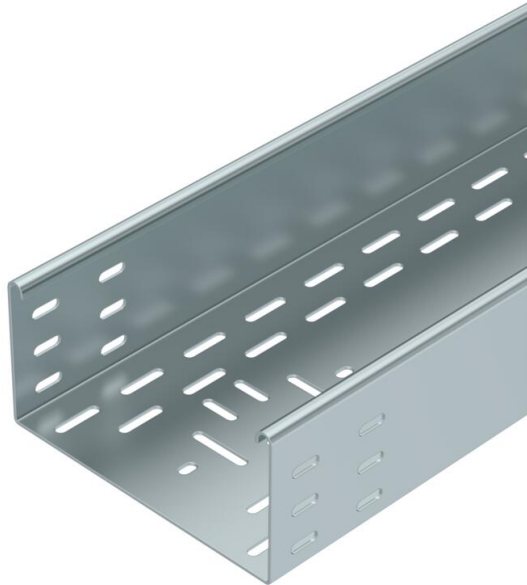


Technical data sheet

Cable tray BKRS 100 FS

Item number: 6062002



Heavy-duty, walkable cable tray system BKRS with base perforation, in 100 mm side height.
The cable tray has connector perforations on both sides.
Straight connectors should be ordered separately and in the appropriate quantity.
Magnetic shield insulation without cover 20 dB, with cover 50 dB.



St Steel

FS Strip galvanized

Master data

Item number	6062002
Description 1	Cable tray BKRS
Description 2	walkable
Manufacturer	OBO
Dimension	100x200x3000
Colour	zinc
Material	Steel
Surface	Strip galvanized
Surface standard	DIN EN 10346
Smallest sales unit	3
Unit of quantity	Metre
Weight	614.567 kg
Weight unit	kg/100 m
CO Footprint (GWP) Cradle-to-Gate	14,969 kg COe / 1 Meter

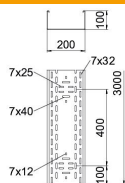
Technical data sheet

Cable tray BKRS 100 FS

Item number: 6062002



Dimensions



Length	3,000 mm
Length	10 ft
Width	200 mm
Width	8 in
Height	100 mm
Height	4 in
Plate thickness	0.08 in
Plate thickness	2 mm
Dimension B	200 mm
Dimension H	100 mm
Dimension L	3,000 mm

Technical data

Connector version	Without connectors
Mounting system fastening type	Floor
Walkable	yes
Maintain electrical functions	no
With cover	no
Mounting perforation in base	yes
NATO hole pattern	no
Usable cross-section	171 cm ²
Usable cross-section	17052 mm ²
Rustproof steel, pickled	no
Side perforation	no
Wide-span version	no
Load test type according to IEC 61537	Type II
Type of connector, cable support system	Screwed